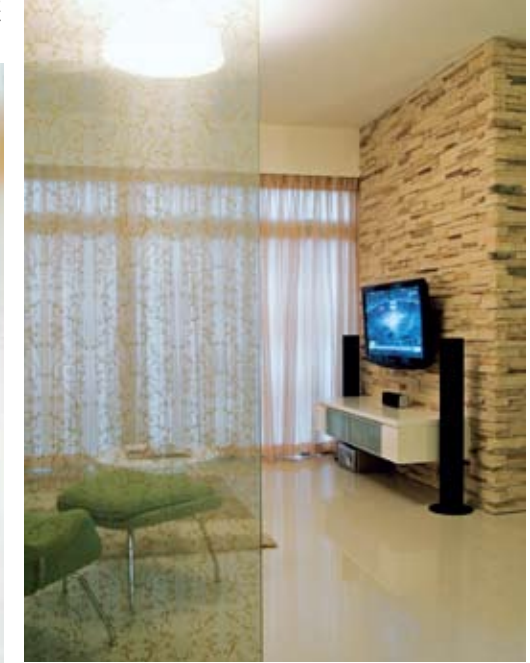


SUBTLE NATURE-INSPIRED ELEMENTS CAN BE FOUND THROUGHOUT THE APARTMENT



THIS APARTMENT AT VARSITY PARK LOOKS A LOT BIGGER THAN IT REALLY IS, THANKS TO A FEW SMART MOVES

TEXT MICHELE KOH PHOTOS KNQ ASSOCIATES

THIS APARTMENT LOCATED at Varsity Park on West Coast Road belongs to a young couple who did not exactly have a clear idea of what they wanted. By referring to pictures in interior magazines, however, they both agreed that they desired a contemporary look that would be easy to maintain. After all, both are busy working professionals who do not want to fuss too much over housekeeping. By the time KNQ Associates was done decorating the unit, the couple were pretty clear that this was a place they could definitely call home.

At approximately 93sqm, this two-bedroom apartment is not exactly very big, so the team at KNQ Associates decided that creating the illusion of spaciousness would be one of their top priorities. The lady owner also had a penchant for floral themes, so the designers drew inspiration from flowers and took their cues from elements found in the garden. Floral prints, stone, raw wood and greenery all came together to help create an interior that was breezy and bright.

M A R K I N G S P A C E

THE FOYER HAS A BUILT-IN SEAT WHERE GUESTS CAN SIT DOWN TO REMOVE THEIR SHOES



KNQ Associates' design consultant Stanley Tham tells us that when it comes to designing for a compact space like this, "creating a feeling of space and refinement is of utmost importance". With the constraints of a small floor area, KNQ Associates had to make the most out of the various zones: the entrance foyer, living room, dining room, master bedroom and study room. Creating this illusion of space involved more than simply opening up the apartment's interior; dividing a space into various 'pockets' made the apartment appear much roomier. White walls, light unvarnished wood panels and full-length mirrors also helped to enhance the sense of spaciousness, while the newly created entrance foyer, kept uncluttered and clean, now had a built-in bench against the wall where guests could sit down to remove their shoes.

... DIVIDING A SPACE
INTO VARIOUS "POCKETS"
MADE THE APARTMENT
APPEAR MUCH ROOMIER





THE FULL-LENGTH MIRRORS SERVE TO 'DOUBLE' THE DINING SPACE

THE FUNCTIONAL STUDY TAKES ON CHEERY COLOURS



Instead of knocking down walls, the designers reconfigured the entrance to the living room by erecting a laminated fabric-glass panel partition. This 'open' concept means one can walk from the newly created entrance foyer straight into the living room. The colour scheme of the living room was kept simple, and the unique feature here is an exquisite cut stone feature wall on which the television is mounted. So as not to go over board with the floral motif, the designers opted for elegant two-textured white wallpaper with floral prints. On the opposite side of the living room is the dining area where tall mirrors, highlighted by recessed lighting at the sides, further the sense of space. The garden theme continues in the master bedroom. "We opted for a simple palette of materials, which is repeated throughout the apartment, creating a continuity that adds to the sophistication. In the bedroom, the aim was to create a glamorous, upmarket retreat that was cosy and welcoming – a 'Garden of Eden' where the couple could relax in," says Stanley.

It took KNQ Associates one month to complete this project, and the main materials used were laminate, glass, cultured stone, mirrors, wallpaper and fabric with customised and specially selected furniture pieces from local shops. Stanley tells us, "Being a newly TOP-ed compact condominium apartment, there was no need for us to undertake major renovation works within. The main objective was to create a liveable and cosy space that would cater to the couple at this stage of their lives." **hc**

KNQ ASSOCIATES
29A LOWLAND ROAD
TEL: 6222 0966
EMAIL: ENQUIRY@KNQASSOCIATES.COM
WWW.KNQASSOCIATES.COM